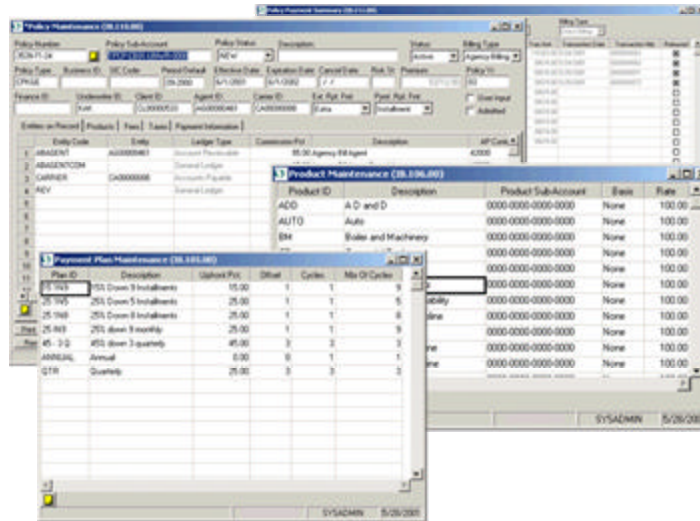
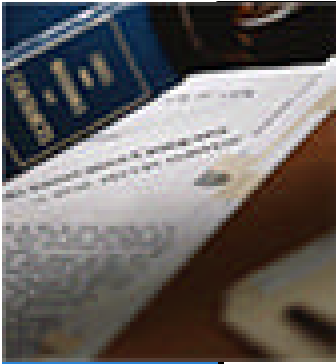


MGA Insurance for Solomon IV 4.5



MGA Insurance

EIS MGA Insurance is a full-featured module designed for transparent integration with Solomon IV 4.5. It provides all the features needed to manage the flow of paper work for the MGA operation. Completely integrates with Solomon IV 4.5 Accounts Receivable, General Ledger, Accounts Payable, Cash Manager, System Manager and Crystal Report.

Technology: Visual Basic 6.0, Microsoft 115 5.0, Microsoft SQL Server 7.0, Crystal Reports 7.0

Customize the way you do business: MGA Insurance gives you the flexibility to customize any screen or report to meet your needs by using Solomon's Customization Manager. By customizing the form, you have no need to worry about source code changes. This allows you to be compatible, with later releases, and no conversions.

Features/Benefits:

- ✓ Multiple levels of cost and profitability analysis
- ✓ Unlimited Distributions to multiple Agents, Carriers, TPA's or GL Accounts
- ✓ Bi-directional use of AP and AR for receiving and paying carriers and agents
- ✓ Flexible GL posting searches by Client Carrier, Underwriter, Agent, or Finance Company
- ✓ Automatic blocking of agent payable, if carrier or client has not remitted payment
- ✓ Statement and invoice billing for Client, Carrier and Agent
- ✓ Full line of business and SIC coding
- ✓ Automatic posting of renewals
- ✓ GL, AP AR from the PC Magazine/PriceWaterhouseCoopers award winning Solomon Software
- ✓ Powerful report library for in-depth analysis
- ✓ Integration with Microsoft OLAP Cubes for Data Analysis
- ✓ Easily integrated into your legacy system with Visual Basic
- ✓ Pre-defined and custom web pages for clients and agents to access



Stevens Group, Inc.

Toll Free: 800.400.3303 x700
Email: Sales@Stevensgroup.com
Via the web: www.stevensgroup.com

